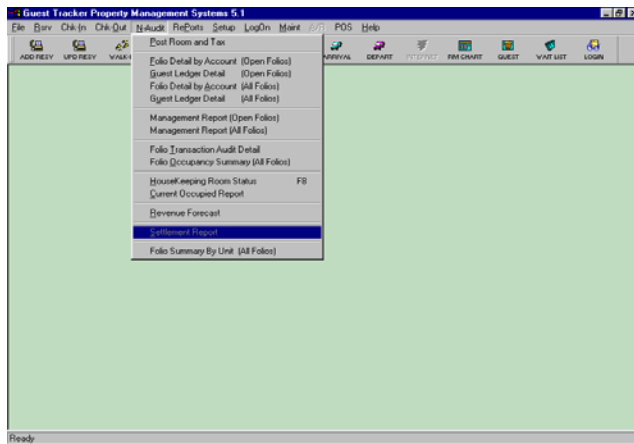


# GuestTracker by TCS Systems inc.

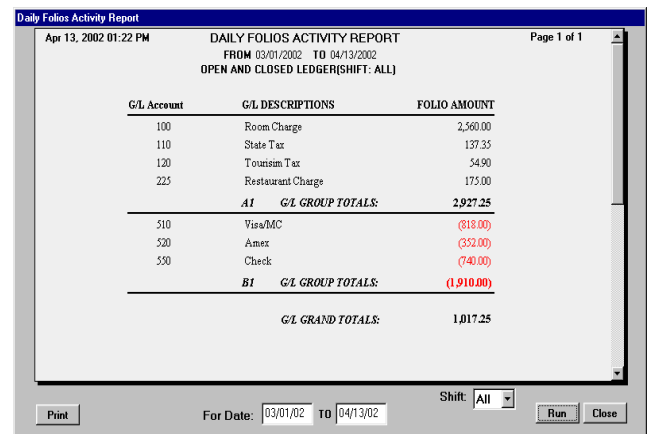
## Guest Tracker Hotel Software

Guest Tracker Hotel Management Software was developed for unique and diverse Hotels & Resorts. We provide software for Hotel Franchises, Motels, Clubs, Multi-Property Resorts, B&B's, State Parks, Rental Properties, Condominiums, Campgrounds, Government Airbases, and Property Management Companies. Our software has many features for all types of properties. Our Product and Implementation support are unequaled and a #1 priority. Our many GuestTracker Interface Modules including Call Accounting and Credit Card Integration offers you the flexibility you need in a new implementation. Guest Tracker is developed by TCS Systems inc., a Software Development Company.

### MAIN MENU



### MANAGEMENT REPORTING



G/L Account	G/L DESCRIPTIONS	FOLIO AMOUNT
100	Room Charge	2,560.00
110	State Tax	137.35
120	Tourism Tax	54.90
225	Restaurant Charge	175.00
<b>A1</b>	<b>G/L GROUP TOTALS:</b>	<b>2,927.25</b>
310	Visa/MC	(818.00)
320	Amer	(352.00)
350	Check	(740.00)
<b>B1</b>	<b>G/L GROUP TOTALS:</b>	<b>(1,910.00)</b>
	<b>G/L GRAND TOTALS:</b>	<b>1,017.25</b>

## Guest Tracker Hotel Management Software Features

### Highlights

Open Access, SQL, Oracle  
Multi-user network version  
Windows 98/NT/2000/XP  
Custom MS Word letters  
Extensive Look-up features  
Multi-Tasking Windows  
Filter / Sort all reporting  
Guest Notes - popup notes  
Automatic Room/Rates  
Refund charges - adjustments  
Import/Export to Databases

### Reservation Features

1-Step Reservation screen  
Groups / Packages  
Extended Stay features  
E-mail confirmations  
Waiting Lists  
Guest Notes  
Master folios / Direct Bill  
Room / Tape Charts

Room Shuffle features  
Advanced Deposits postings  
Pre Post charges at check In  
Arrival / Departures in Detail  
Room Chart Reservations

### Folio Management

Arrival/ Departure reports  
City Ledger / Direct Bill  
Night Audit Reporting  
Folio Billing / Receipts  
Folio summary and details  
Guest Ledger - In House  
All reporting by user, shift, id  
Group folios and incidentals  
POS register module  
Deposits Due aging report  
Revenue Forecast reports  
Housekeeping Maintenance

### Guest History

History reports by Market Code  
History reports by Guest Type  
Mailing Labels by Guest

History Filtered by date / type  
Guest History by Room / Rate  
Invoice Detail bill re-creation  
Guest Ledger History  
Audit History of all transactions  
Message history by Guest  
Room History graphs by Room

### Interface Modules

Network Multi-user Interface  
Call Accounting Module  
Call Accounting Interface  
Credit Card Processing Module  
Point of Sale Interface  
Club Software Interface  
Central Reservation Interface  
Internet/GDS Reservations  
Accounting Module Interfaces  
On-line and On-Site training

CONTACT TCS SYSTEMS  
[www.guesttracker.com](http://www.guesttracker.com)  
[tcs@guesttracker.com](mailto:tcs@guesttracker.com)

800 724 9883

# GuestTracker by TCS Systems inc.

## GUEST FOLIO MANAGEMENT

Clear, Fast, Concise Folio Screens. Quick to find a Guests Account and a balance due, Room charges and incidentals can have separate folios with our PMS module. Folios are sent to history and can then be retrieved in the future for billing inquiries or disputes. You can print a past Invoice or review an account. There are receipts by date for long term residential properties using a balance forward amount for past charges. You can view a snap shot of the original reservation with 1 click of the mouse to review reservation details or Guest notes. Our Call Accounting Interface will auto-post all phone charges, phone numbers, and duration of call to each room as the call is completed. Each property will also setup their own unique chart of accounts, taxes, and account descriptions for all management reporting.

Line No.	Folio Date	Room No.	G/L No.	G/L Account Description	CHARGES	PAYMENTS
51	04/05/2002	120	100	Package - Golf	350.00	
52	04/05/2002	120	225	Restaurant Charge	100.00	
53	04/05/2002	120	110	State Tax	27.50	
54	04/05/2002	120	120	City Tax	10.50	
Subtotal					488.00	
56	04/05/2002	120	510	Frns/MC		488.00
Subtotal					488.00	

BALANCE DUE ==>>> \$ 0.00

## INVENTORY ROOM / TAPE CHARTS

Room #	Type	Stat	04/04/02	04/05/02	04/06/02	04/07/02	04/08/02	04/09/02	04/10/02	04/11/02	04/12/02	04/13/02	04/14/02	04/15/02
112	DOUBLE	VC												
114	DOUBLE	DD												
120	DOUBLE	DD												
128	DOUBLE	DD												
130	DOUBLE	DD												
136	DOUBLE	VC												
142	DOUBLE	NS												
144	DOUBLE	NS												
146	DOUBLE	NS												
116	KING	VC												
118	KING	VC												
134	KING	VC												
148	KING	VC												
152	KING	VC												
154	KING	VC												
156	KING	DD												
200	KING	VC												
119	KING	NS												
158	KING	NS												
124	QUEEN	VC												
140	QUEEN	VC												

Reservations, deposits, availability, and In-house guests can be displayed from the room chart. You may also start a new reservation from here or review an existing one. Filter by room type and sort by either room type or room number. Colors indicate room status for each room. You can click and shuffle reservations or create reservations with a room move if you are close to 100% occupied. Select to sort by room number or room type. Also, Filter your Room Chart for 1 selected Room type at a time. When you are ready to book a reservation just click on the blue box that intersects your room number with your selected arrival date, this will initiate the reservation entry program that will allow you to continue entering the reservation detail.

Reservations Entry and Guest Info Management work together to allow reservations and Guests Inquires to be managed. The reservations module is easy-to-use and robust. Groups, room changes, Packages, Packages + extra nights, Group master bills, Inventory searches, deposit requirements, Letter generation by print or e-mails can all be managed from 1 screen.

For a detailed view of Guests reservations and detailed history, use the Guest management Info/History View. Quickly, search for a Guest name and retrieve all relevant information on reservations, past visits, unlimited guest notes, and address info. TCS Guest Tracker features have been designed with the user in mind!

## RESERVATIONS ENTRY

Guest Tracker Property Management Systems 5.1 - [Reservation Screen]

ARRIVAL: 04/07/02 To 04/14/02 (7 Nights) Room Type: KING Rate/Night: 140.00 Discount: .00

Guest Type: 2 GROUT/Rate Plan Tax Exempt: Misc. Acct: Amt: 0.00 Total Tax: 0.00 Reservation Total: 4214.00

Guest Name: Tom Bayton  
Address 1: 12 STREET  
City, State: Belleville, NJ  
Phone/Salut: (346) 246-8654

Charge Card: Type: Other Name: Acct #: Exp Date: / /

Deposit/Payment: Amount: 2,108.00 Account: 550 Date: 03/24/02

Settlement: 0.00 Market Code: 5

## GUEST INFO / HISTORY VIEW

Conf #	Arrival	Depart	Room #	Room Type	Room Rate	Rate Type	Market Type	R
17	11/04/98	11/08/98	158	DOUBLE NS	100.00	DAILY	Market let	
39	12/04/98	12/08/98	206	DOUBLE NS	100.00	DAILY	Market let	

Conf No	Arrival	Departure	Room #	Room Type	Guest Type	Rate Type	Rate
41	04/07/02	04/14/02	152	KING	0	DAILY	\$140.00
42	04/07/02	04/14/02	154	KING	0	DAILY	\$140.00
43	04/07/02	04/14/02	200	KING	0	DAILY	\$140.00
44	04/07/02	04/13/02	118	KING	0	DAILY	\$140.00
37	04/05/02	04/06/02	120	DOUBLE	0	PACKAGE1	\$350.00